

FOR DIVERSION REFER TO DRAWING
AUX-TTM-AMEY-676-M4-J23A-MAGOR-SCHEME-PH01.2

NOTES:

- All signs, markings and safety zones will be in accordance with Traffic Signs Manual.
- Sign locations are indicative only and exact locations will be determined on site.
- Works Access and Egress locations to be agreed on site and any changes to the design should be reported.

DETAIL A

Running lane(s)

Hard Shoulder

Verge

Notes:

- During darkness, a single warning light to BS EN 12352:2006 should be provided.
- Traffic cones should conform to diagram 7101.1 and to BS EN 13422.

DETAIL B

Notes:

- During darkness, warning lights to BS EN 12352:2006 should be provided in accordance with Table A1.3 (Appendix 1).
- 45° tapers have 1.5m spacing, no relaxations.
- On motorways and NSL AP duals with hard shoulders, 1m cones will be required for both standard and relaxation works for lead tapers and the facing wall of lane changes.

DETAIL C1

Notes:

- During darkness, warning lights to BS EN 12352:2006 should be provided in accordance with Table A1.3 (Appendix 1).
- For relaxation to Detail C1 see Table A1.3 (Appendix 1).

DETAIL D

Notes:

- During darkness, warning lights to BS EN 12352:2006 should be provided in accordance with Table A1.3 (Appendix 1).
- Detail D applies only to relaxation cases.

Key:

- Safety Zone
- Works Area
- Road Closed
- Diversions
- Pedestrian Route
- Cone or Road Marking Detail
- Sign
- Cone Line

| Revision | By | Checked | Approved | Date | Description |
|----------|----|---------|----------|------|-------------|
| | | | | | |
| | | | | | |
| | | | | | |

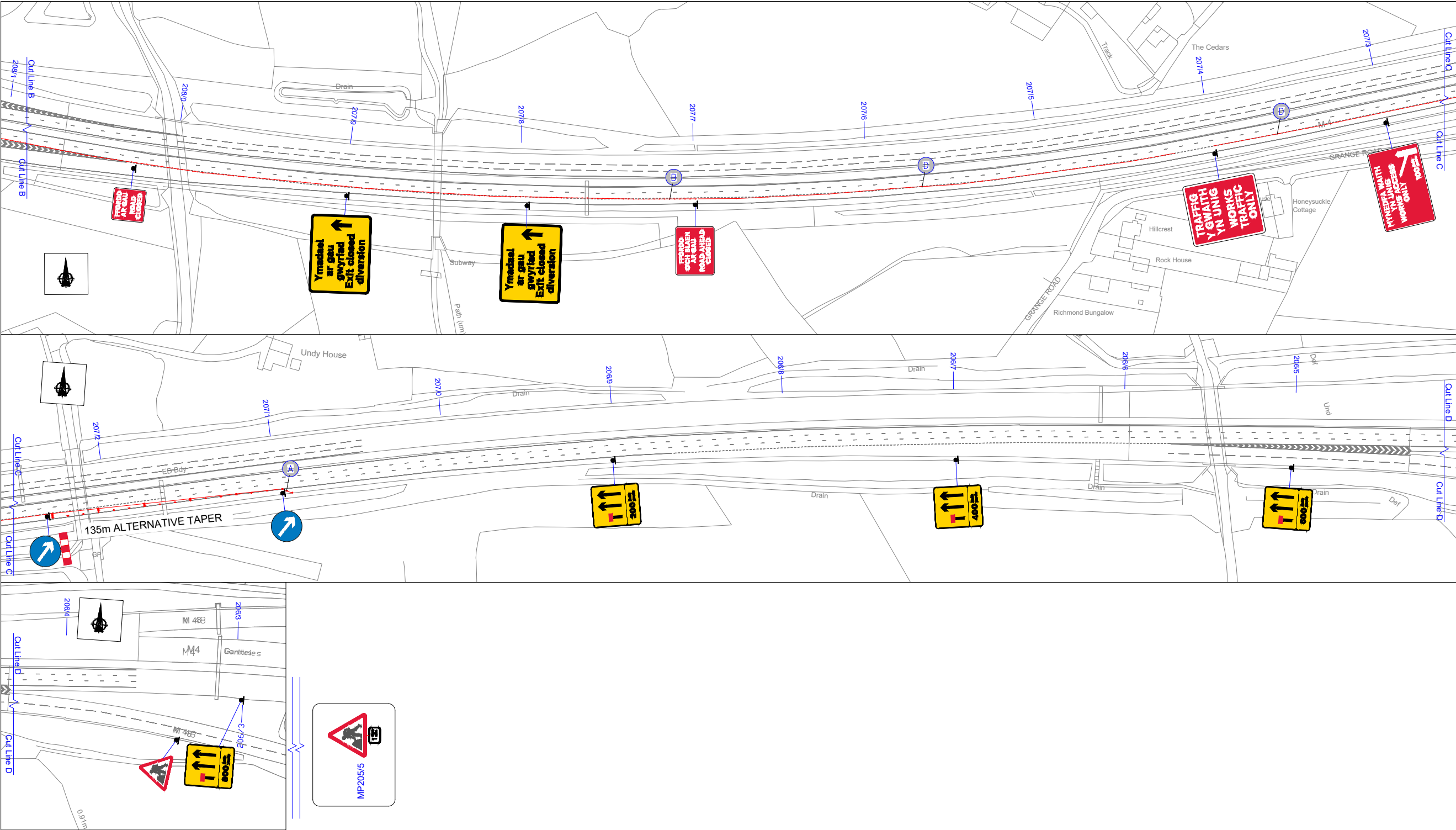
Amey

Title: M4 JUNCTION 23A
MAGOR INTERCHANGE SCHEME
FULL CLOSURE DETAILS

SHEET 1

| Designed | DP | 09.12.25 | Eng. Chk. | x | x |
|-------------|--|----------|--------------|--------|---|
| Drawn | DP | 09.12.25 | Coordination | x | x |
| Dwg Chk. | BD | 09.12.25 | Approved | x | x |
| Scale at A3 | 1:1250 | Project | x | Status | X |
| Drawing No | AUX-TTM-AMEY-675-M4-J23A-MAGOR-SCHEME-PH01.1 | Rev | X | | |

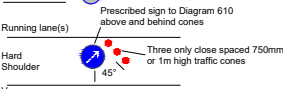
A3



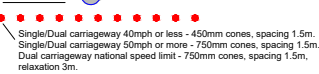
NOTES:

1. All signs, markings and safety zones will be in accordance with Traffic Signs Manual.
2. Sign locations are indicative only and exact locations will be determined on site.
3. Works Access and Egress locations to be agreed on site and any changes to the design should be reported.

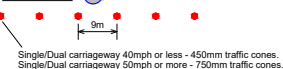
DETAIL A



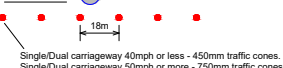
DETAIL B



DETAIL C1



DETAIL D



| Key: | |
|------|-----------------------------|
| | Safety Zone |
| | Works Area |
| | Road Closed |
| | Diversion |
| | Pedestrian Route |
| | Cone or Road Marking Detail |

| Revision | By | Checked | Approved | Date | Description |
|----------|----|---------|----------|------|-------------|
| | | | | | |
| | | | | | |
| | | | | | |

Amey

| | | | | | |
|---|--------|----------|--------------|---|--------|
| Title | | | | | |
| M4 JUNCTION 23A MAGOR INTERCHANGE SCHEME FULL CLOSURE DETAILS | | | | | |
| SHEET 1 | | | | | |
| Designed | DP | 09.12.25 | Eng Chk. | x | x |
| Drawn | DP | 09.12.25 | Coordination | x | x |
| Dwg Chk. | BD | 09.12.25 | Approved | x | x |
| Scale at A3 | 1:1250 | Project | | | Status |
| | | x | | | x |
| Drawing No | | | | | Rev |
| AUX-TTM-AMEY-675-M4-J23A-MAGOR-SCHEME-PH01.1 | | | | | X |