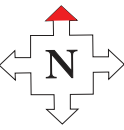
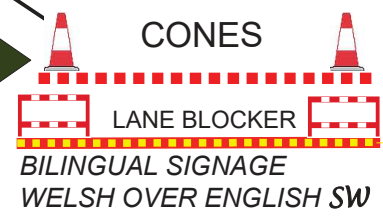
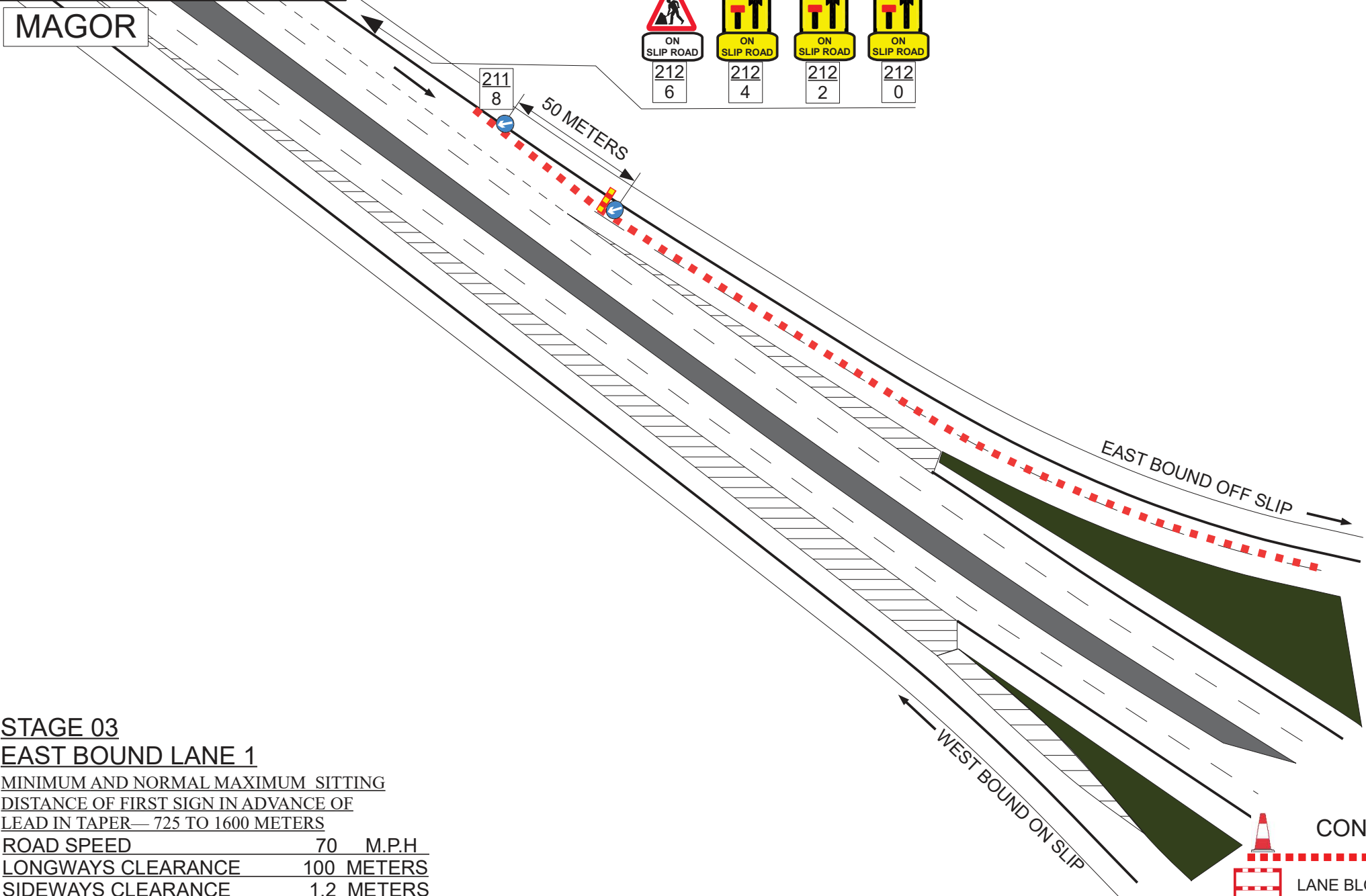
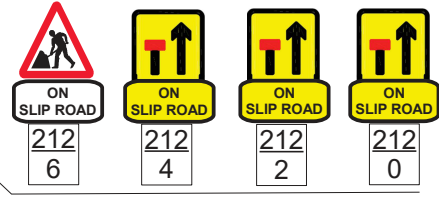


# M4 JUNCTION 23 EAST BOUND OFF SLIP



MAGOR



## STAGE 03 EAST BOUND LANE 1

MINIMUM AND NORMAL MAXIMUM SITTING  
DISTANCE OF FIRST SIGN IN ADVANCE OF  
LEAD IN TAPER— 725 TO 1600 METERS

ROAD SPEED	70	M.P.H
LONGWAYS CLEARANCE	100	METERS
SIDWAYS CLEARANCE	1.2	METERS
RESIDUAL LANE WIDTH	3.5	METERS
LENGTH OF RUN	225	METERS