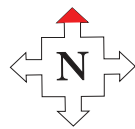
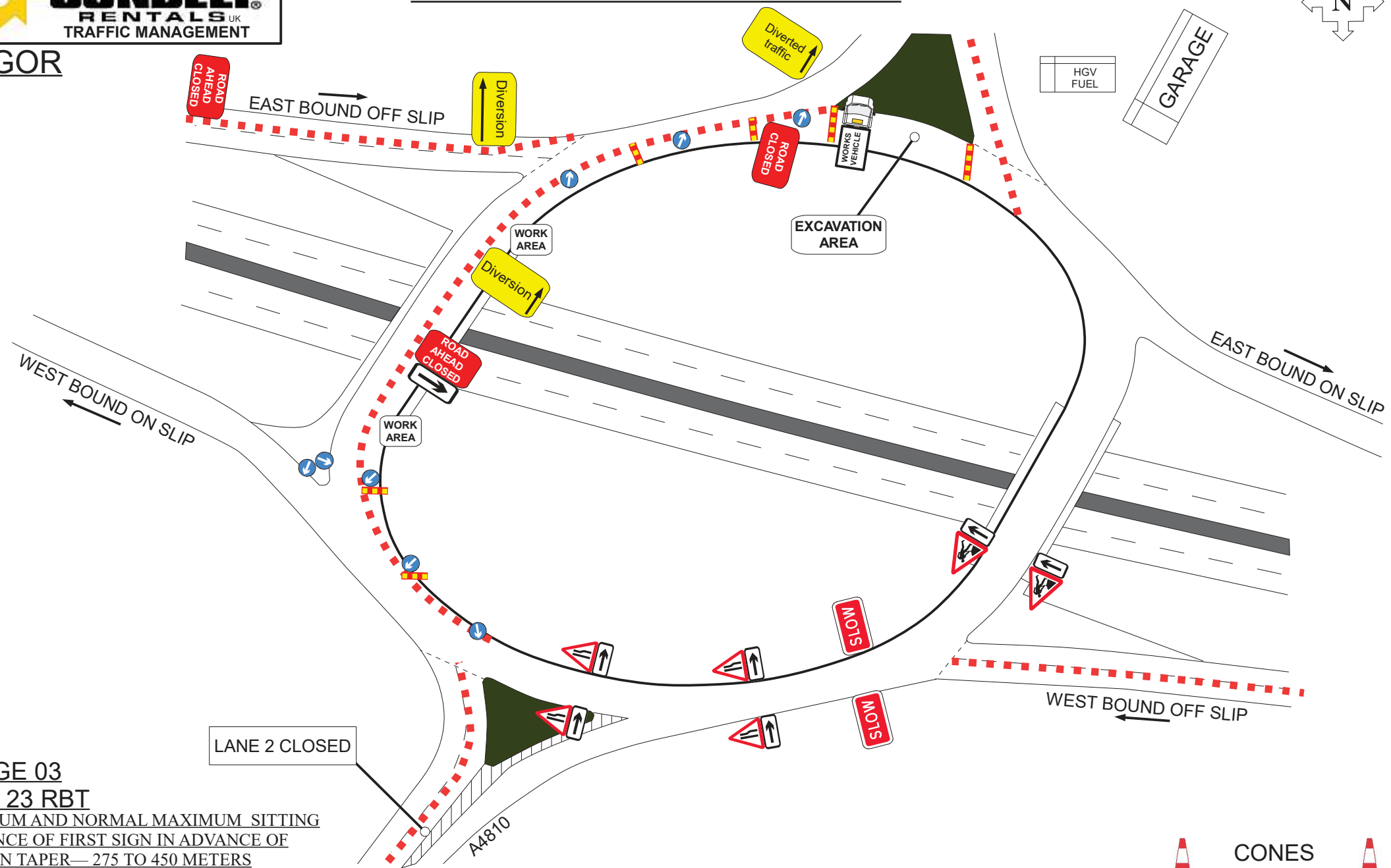


# M4 JUNCTION 23 ROUNDABOUT



MAGOR



**STAGE 03**  
**M4 J 23 RBT**  
 MINIMUM AND NORMAL MAXIMUM SITTING  
 DISTANCE OF FIRST SIGN IN ADVANCE OF  
 LEAD IN TAPER— 275 TO 450 METERS

ROAD SPEED	60	M.P.H
LONGWAYS CLEARANCE	60	METERS
SIDWAYS CLEARANCE	1.2	METERS
RESIDUAL LANE WIDTH	3.5	METERS

**CONES**

**LANE BLOCKER**

**BILINGUAL SIGNAGE**  
 WELSH OVER ENGLISH SW