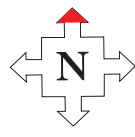
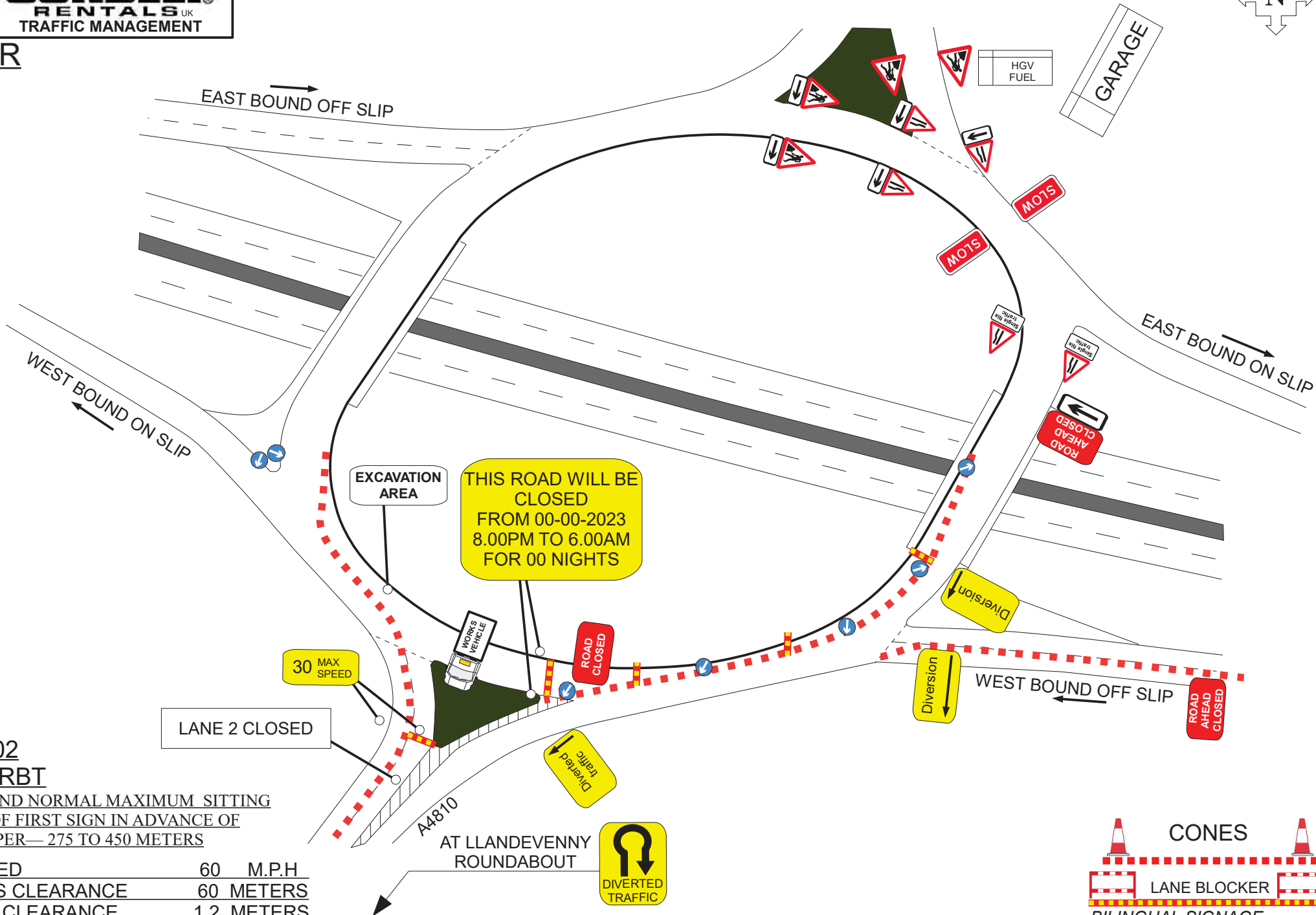


M4 JUNCTION 23 ROUNDABOUT



MAGOR



**STAGE 02
M4 J 23 RBT**

MINIMUM AND NORMAL MAXIMUM SITTING DISTANCE OF FIRST SIGN IN ADVANCE OF LEAD IN TAPER— 275 TO 450 METERS

ROAD SPEED	60	M.P.H
LONGWAYS CLEARANCE	60	METERS
SIDWAYS CLEARANCE	1.2	METERS
RESIDUAL LANE WIDTH	3.5	METERS

CONES

LANE BLOCKER

BILINGUAL SIGNAGE
WELSH OVER ENGLISH SW

