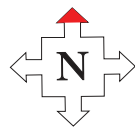


A4810 JUNCTION 23 APPROACH



MAGOR

LANE 1 CLOSED

30 MAX SPEED

30 MAX SPEED

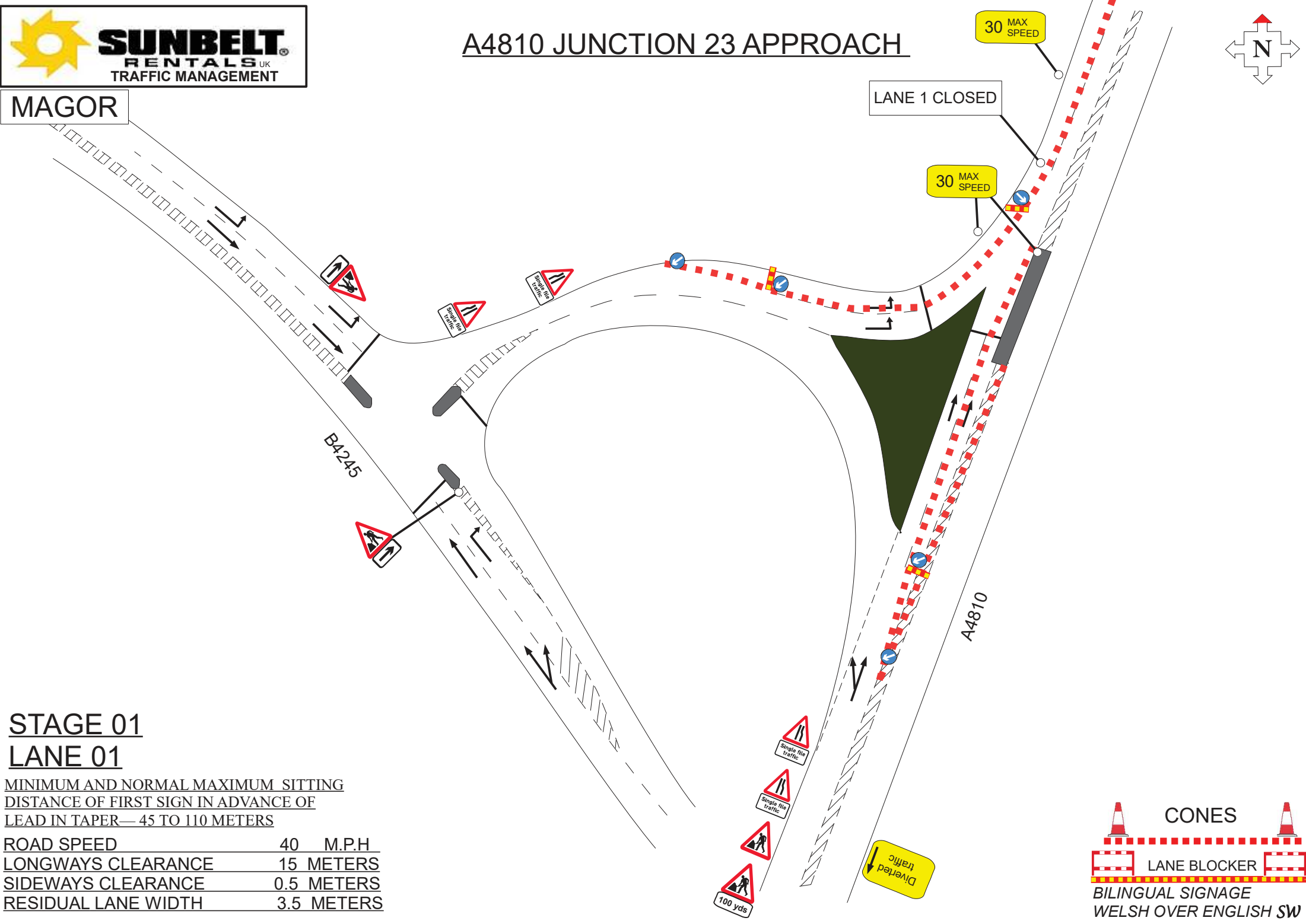
BA245

A4810

STAGE 01 LANE 01

MINIMUM AND NORMAL MAXIMUM SITTING
DISTANCE OF FIRST SIGN IN ADVANCE OF
LEAD IN TAPER— 45 TO 110 METERS

ROAD SPEED	40 M.P.H
LONGWAYS CLEARANCE	15 METERS
SIDWAYS CLEARANCE	0.5 METERS
RESIDUAL LANE WIDTH	3.5 METERS



CONES

LANE BLOCKER

BILINGUAL SIGNAGE
WELSH OVER ENGLISH SW

100 yds

Single file traffic

Single file traffic

Diverged traffic